

Hydrogen Valley Campus Europe -HVCE

Hydrogen Valley Campuses for a Hydrogen Economy

# What's already there?

Our building blocks:

Logos included in the grid:

- WATER CAMPUS Leeuwarden
- EnTranCe CENTER OF ENERGY ENERGY
- Groene Waterstof Booster
- INVESTA EXPERTISE CENTRUM
- Learning Community Systeemintegratie
- KATA PULT AANJAGERS VAN DE KENNIS VOOR MORGEN
- HY NORTH Connecting hydrogen
- Energiecampus Leeuwarden
- Nationaal Groeifonds
- Waterstof Werkt
- CHEMPORT INNOVATION CENTER
- greenwise campus
- Universiteit van het Noorden
- Hydrohub
- Hy2 MARKET
- Energy College
- New Energy Business School
- HyDelta
- HEAVENN
- ENERGIE HUB 050



# What's missing?

1. Connection
2. Practical experience
3. International prestige

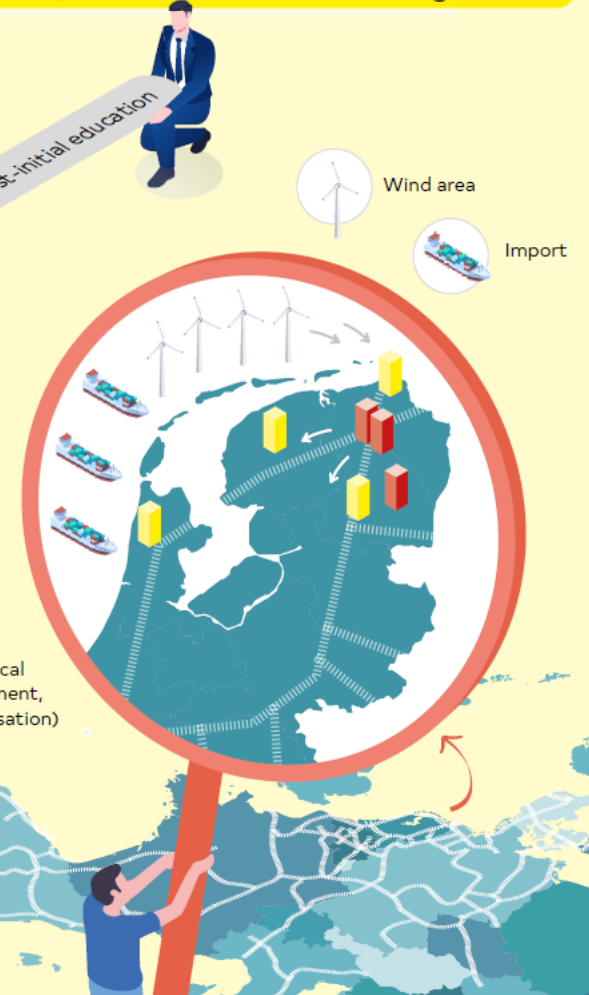
# What we will do?

1. One organization: the Hydrogen Valley Campus Europe
2. Working, learning and practical training at 7 hotspots in the Northern Netherlands
3. Strong marketing and outstanding locations for research, innovation and valorisation at a global level

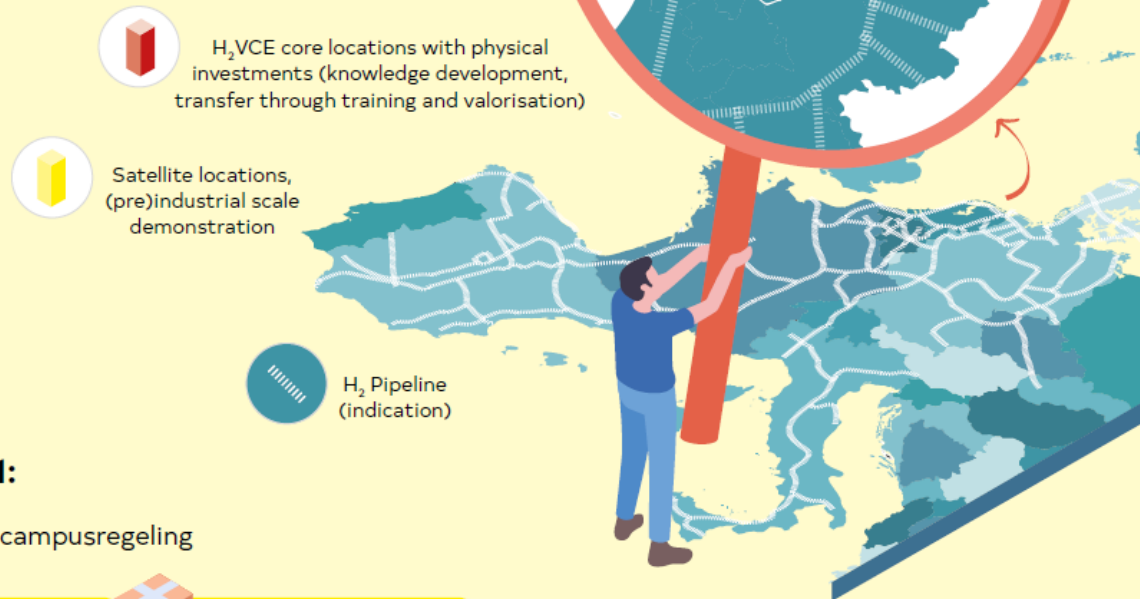
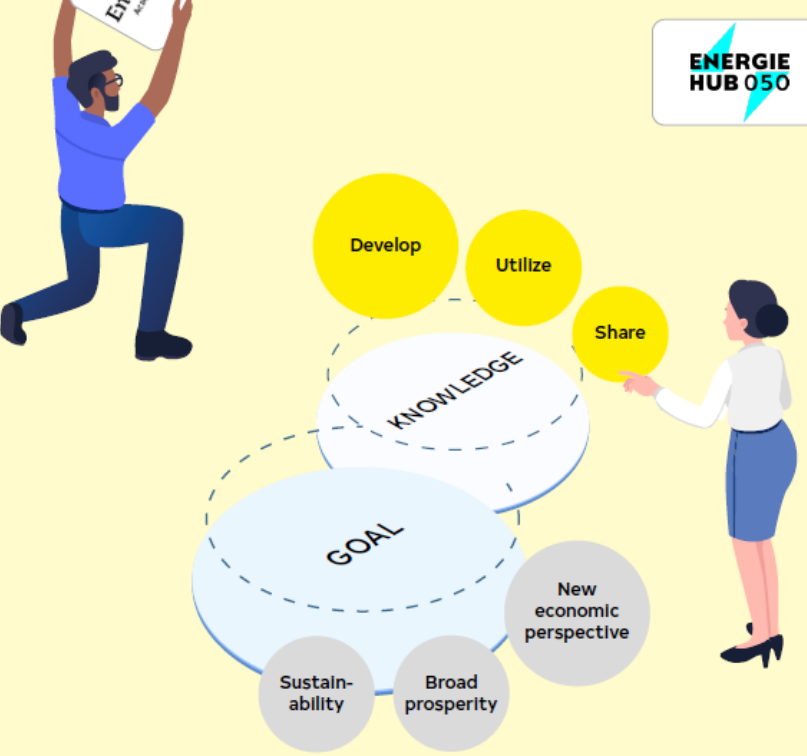


# The H2VCE program connects:

1. Primary education - Secondary education - (Vocational) Higher education - Post-initial education
2. Law - Economics - Science & Engineering - Spatial science - Social studies
3. Activities in the hydrogen value chain (production, distribution, storage, use)
4. The quadruple helix (knowledge institutions, industry, government and citizens)
5. Technology in early stage: TRLs 1-3 - Mid-stage: TRLs 4-6 - Late stage: TRLs 7-9
6. System integration - Green molecules - Circularity







### JTF program proposals phase 1:

#### H<sub>2</sub> knowledge and innovation HUB | JTF campusregeling

- 1 Cooperation organization
- 2 Interdisciplinary knowledge infrastructure
- 3 Reinforcement of practice and test centers

#### H<sub>2</sub> train and learn HUB | JTF Transitierегeling

- 1 Educational offer
- 2 Knowledge development
- 3 Learning-working trajectories
- 4 Practical learning
- 5 Internships and side jobs
- 6 Online tools
- 7 Promotion and marketing
- 8 Online information pack
- 9 Practor-lector-professor
- 10 Coordination, dissemination and public activities



H<sub>2</sub> business HUB | JTF StartUp regeling: Integrated support for early stage startups and scale ups

H<sub>2</sub> research HUB | JTF valorisatie regeling: Integral research and high-quality knowledge development

# MAIN CHALLENGES:

**HUMAN FACTOR** → Diffidence in what is different, past negative experiences, pride, greediness

**TIME** → High urgency, but agenda's are already full!

**RESOURCES** → High upfront investments costs, fragmented subsidy sources, complex public-private schemes, multitude of priorities

**REGULATION** → Conservativism, fragmentation, unclarity

## HOW TO SOLVE THEM?

# Next Steps:

**Submit JTF proposals** → 1st of March

**Keep working on upscaling** → National Programme Groningen / Growth Fund / Horizon

**Keep working on consortium and ecosystem** → Attract new partners, meet new actors, talk to the public

**DO YOU WANT TO KNOW MORE?** → just email me! [L.Squintani@rug.nl](mailto:L.Squintani@rug.nl)



# THANKS FOR YOUR TIME!